

# **Passagen**

**Tanzsuite**

**für  
Altflöte (G)  
Klarinette (A)  
Violine  
Viola  
Violoncello**

**Cornelius Schwehr, 2012**

# Erläuterungen

## Mikrotonale Abweichungen:

Vierteltöne sind wie üblich, Achteltöne mit Pfeilen an den Versetzungszeichen notiert.

## Flöte und Klarinette:



nur Luft durchs Instrument blasen



kurzer, scharfer Luftstoss

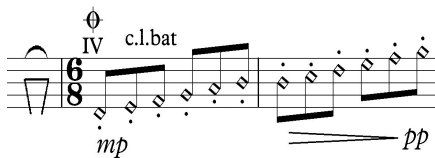


hoher Luftgeräuschanteil bei (gerade noch) wahrnehmbarer Tonhöhe

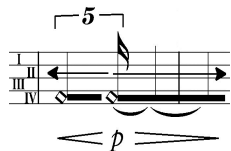


Klappenschlag, immer leicht (!) mit Zungenstoss unterstützten

## Streicher:



c.l.bat. auf der abgedämpften IV.Saite zwischen Griffbrett und Steg



mit dem Bogen parallel zur Saite wischen  
(vom Steg weg, zum Steg hin)



kurzer, geworfener Wisch



Saite nur "halb" niederdrücken, hoher Streichgeräuschanteil  
bei gerade noch wahrnehmbarer Tonhöhe

♩ = 90

Altflöte *mp* (sehr kurz) *mp* (sehr kurz)

Klarinette in A *mp* *pp*

Violine *pp* *mp* sul IV c.l.bat Finger langsam abheben

Viola *pp* *mp* *pp* IV c.l.bat

Violoncello *mp* *pp* IV c.l.bat

8

A. Fl. *pp* *mp*

Kl. *pp* *mp*

VI. *pp* *mp* II c.l.bat

Vla. *pp* *mp*

Vc. *pp* *mp* c.l.bat (Flag.-Resultat erkennbar)

15

A. Fl. *mp* *mp* (sehr kurz) *mp*

Kl. *ppp* *mp* (sehr kurz) *pp*

VI. arco ord. *ppp* *pp* III c.l.bat *pp* IV c.l.bat

Vla. III c.l.tratto (quasi legato) *ppp* *pp* *mp*

Vc. *mp* pizz. c.l.b. *mp* IV c.l.bat *pp*

22

A. Fl.

Kl.

VI.

Vla.

Vc.

*mp*

*pp* *mp*

IV c.l.bat

*mp*

*molto*

29

A. Fl.

Kl.

VI.

Vla.

Vc.

*ppp*

c.l.tr.

poco a poco de- cres- cen- do *ppp*

III c.l.tratto, quasi legato

*ppp*

36

A. Fl.

Kl.

VI.

Vla.

Vc.

*mp* *mp* *mp*

*pp* *pp* *pp*

arco ord.

pizz

IV c.l.bat

IV c.l.bat

*pp* *mp* *pp*

*mp* *pp* *pp*

*arco*

43

A. Fl. *sfz sfz sfz sfz sfz pp*

Kl. *sfz sfz sfz sfz sfz pp*  
*molto*

Vl. *sfz sfz sfz sfz sfz pp*  
*c.l.bat c.l.salt. 5 c.l.bat*

Vla. *pp sfz sfz sfz sfz "sfz" pp*  
*c.l.tr. c.l.bat*

Vc. *mp*

50

A. Fl. *p mf sfz ppp*

Kl. *p mf sfz ppp*

Vl. *p mf sfz ppp*

Vla. *p mf sfz ppp*  
*III c.l.tratto, quasi legato*

Vc. *ppp*

57

A. Fl. *p mp*

Kl. *pp mp*  
*(sehr kurz)*

Vl. *pp*

Vla. *pp*  
*IV c.l.bat*

Vc. *mp pp*  
*IV c.l.bat*

64 (sehr kurz)

A. Fl. *mp*

Kl. *pp*

Vi. *pp* *mp*

Vla. *mp* *pp* *mp*

Vc. *pp* *mp* IV c.l.bat

71

A. Fl. *pp*

Kl. *pp* *mp* *pp*

Vi. *pp* *mp* *pp* arco ord. s.t.

Vla. *pp* arco ord. s.t.

Vc. *pp*

IV c.l.bat

78

A. Fl. *pp*

Kl. *pp* *pp*

Vi. *pp*

Vla. *pp*

Vc. *pp*

85 ♩ = 60

A. Fl. *pp*  
Kl. *pp*  
VI. *pp*  
Vla. *pp*  
Vc. *pp*

Detailed description: This system contains measures 85 through 93. The music is in 2/4 time. The flute (A. Fl.) has a melodic line with a fermata at the end of measure 85 and a trill in measure 93. The clarinet (Kl.) plays a rhythmic accompaniment of eighth notes. The violin (VI.) has a melodic line with a fermata in measure 85 and a trill in measure 93. The viola (Vla.) plays a rhythmic accompaniment of eighth notes. The cello (Vc.) has a melodic line with a fermata in measure 85 and a trill in measure 93. Dynamics are marked *pp* throughout.

94

A. Fl. *pp*  
Kl. *pp*  
VI. *pp*  
Vla. *pp*  
Vc. *pp*

Detailed description: This system contains measures 94 through 103. The music is in 2/4 time. The flute (A. Fl.) has a melodic line with a trill in measure 94 and a fermata in measure 103. The clarinet (Kl.) has a melodic line with a trill in measure 94 and a fermata in measure 103. The violin (VI.) has a melodic line with a trill in measure 94 and a fermata in measure 103. The viola (Vla.) has a melodic line with a trill in measure 94 and a fermata in measure 103. The cello (Vc.) has a melodic line with a trill in measure 94 and a fermata in measure 103. Dynamics are marked *pp* throughout. Performance instructions include *c.l.tr.* and *arco ord.*

105 ♩ = 90  
sehr leicht, heiter

A. Fl. *mp*  
Kl. *pp*  
VI. *pp*  
Vla. *pp*  
Vc. *pp*

Detailed description: This system contains measures 105 through 109. The music is in 3/4 time. The flute (A. Fl.) has a melodic line with a trill in measure 105 and a fermata in measure 109. The clarinet (Kl.) has a melodic line with a trill in measure 105 and a fermata in measure 109. The violin (VI.) has a melodic line with a trill in measure 105 and a fermata in measure 109. The viola (Vla.) has a melodic line with a trill in measure 105 and a fermata in measure 109. The cello (Vc.) has a melodic line with a trill in measure 105 and a fermata in measure 109. Dynamics are marked *mp* for the flute and *pp* for the other instruments. Performance instructions include *pizz*.

113

A. Fl. Kl. VI. Vla. Vc.

*pp*

*pp*

This system contains measures 113 through 119. It features five staves: A. Fl., Kl., VI., Vla., and Vc. The music is in a key with two flats and a 3/4 time signature. The A. Fl. part begins with a melodic line and includes a *pp* dynamic marking at the end. The Kl. part provides harmonic support with chords and moving lines. The VI. part has a melodic line with some rests. The Vla. part has a melodic line with a *pp* dynamic marking. The Vc. part has a melodic line with a *pp* dynamic marking.

120

A. Fl. Kl. VI. Vla. Vc.

*p*

*p*

*pp*

*etwas hervortreten*

*l.v.*

*arco ord.*

This system contains measures 120 through 126. It features five staves: A. Fl., Kl., VI., Vla., and Vc. The A. Fl. part has a melodic line with a *p* dynamic marking. The Kl. part has a rhythmic accompaniment with a *p* dynamic marking. The VI. part has a melodic line with a *p* dynamic marking. The Vla. part has a melodic line with the instruction *etwas hervortreten* and *l.v.* The Vc. part has a melodic line with *arco ord.* and a *pp* dynamic marking. A hairpin symbol is present at the end of the Vc. staff.

127

A. Fl. Kl. VI. Vla. Vc.

*pp*

*p*

*c.l.b.*

*p*

*l.v.*

*pp*

*p*

This system contains measures 127 through 133. It features five staves: A. Fl., Kl., VI., Vla., and Vc. The A. Fl. part has a melodic line with a *pp* dynamic marking. The Kl. part has a rhythmic accompaniment with a *p* dynamic marking. The VI. part has a melodic line with a *p* dynamic marking and the instruction *c.l.b.*. The Vla. part has a melodic line with a *p* dynamic marking and the instruction *l.v.*. The Vc. part has a melodic line with a *pp* dynamic marking and a *p* dynamic marking.



134

A. Fl. *pp* *pp*

Kl.

Vl.

Vla.

Vc.

142

(Tonhöhe deutlich)

A. Fl. *p*

Kl. *p* (Tonhöhe deutlich)

Vl. *p*

Vla. *pp* *c.l.tratto* *gliss.*

Vc. *pp* — *p*

149

A. Fl.

Kl.

Vl.

Vla. *gliss.*

Vc.

156

A. Fl. *p* *pp* *poco* *p*

Kl. *pp*

Vi. *arco ord.* *p*

Vla. *gliss.* *pizz* *p* *arco* *p*

Vc. *pizz* *etwas hervortreten* *p*

163

A. Fl. *p* *poco* *pp*

Kl. *pp* *pp*

Vi. *pp* *poco*

Vla. *pp* *poco* *pp*

Vc. *mp*

$\text{♩} = 60$

172

A. Fl. *pp* *pp*

Kl. *pp*

Vi. *pp* *pp*

Vla. *p* *pp*

Vc. *pp*

184 ♩ = 40

A. Fl. *pp* *mp* *poco sfz*

Kl. *pp* *poco sfz* *pp*

Vl. *c.l.tr* *arco ord.* *pp* *c.l.bat.* *poco sfz*

Vla. *poco sfz* *c.l.bat.*

Vc. *pp* *ppp* *pp* *poco sfz*

in den Takten 196 - 211  
die stacc. so kurz, dass die  
Tonhöhe nur zu errahnen ist.

197

A. Fl. *pp* *poco sfz* *pp*

Kl. *poco sfz* *pp* *poco sfz*

Vl. *arco ord.* *pp* *c.l.bat.* *poco sfz* *arco ord.* *pp* *arco ord.*

Vla. *pp* *c.l.bat.* *poco sfz* *arco ord.* *pp* *c.l.bat.* *poco sfz*

Vc. *pp* *arco ord.* *pp* *c.l.bat.* *poco sfz*

206 ♩ = 90

A. Fl. *poco sfz* *pp*

Kl. *poco sfz* *mp* (sehr kurz)

Vl. *c.l.bat.* *poco sfz* *arco ord.* *pp* *c.l.bat.* *poco sfz*

Vla. *c.l.bat.* *pp* *IV* *c.l.bat*

Vc. *arco ord.* *pp* *c.l.bat.* *poco sfz* *IV* *c.l.bat* *mp* *pp*

214

A. Fl. *pp* *mp*

Kl. *pp* *mp*

Vi. *pp* *mp*

Vla. *mp* *pp* *pp* *mp* *pp*

Vc. *pp*

221

A. Fl. *mp*

Kl. *pp*

Vi. *mp* *pp* *mp* *mp sub*

Vla. arco ord. *pp* *mp*

Vc. *mp* *pp*

228

A. Fl. *mp* *mp*

Kl. *pp* *mp* *pp*

Vi. *pp* *mp*

Vla. *pp* *mp* *pp*

Vc. arco ord. *mp*

IV c.l.bat

235

A. Fl. 

Kl. 

Vi. 

Vla. 

Vc. 

242

A. Fl. 

Kl. 

Vi. 

Vla. 

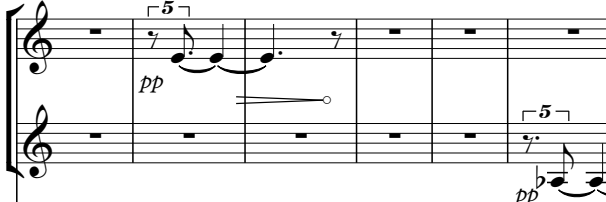
Vc. 

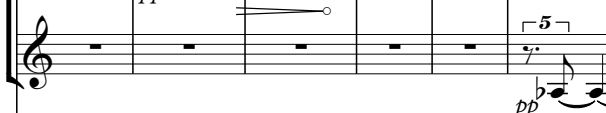
$\text{♩} = 60$


c.l.tratto s.t. Bogenwechsel fast(!) unmerklich


arco ord. poco s.p.


251

A. Fl. 

Kl. 

Vi. 

Vla. 

Vc. 

arco ord. Bogenwechsel sehr dezent



300

A. Fl. *pp*

Kl. *pp*

Vl. *pp*

Vla. *pp*

Vc. *pp*

311

A. Fl. *pp*

Kl. *pp*

Vl. *pp*

Vla. *pp*

Vc. *pp*

322  $\text{♩} = 60$

A. Fl. *ppp*

Kl. *ppp*

Vl. *ppp* arco ord. kein Bogenwechsel

Vla. *ppp* arco ord. kein Bogenwechsel

Vc. *ppp* arco ord. kein Bogenwechsel

327 ♩ = 60  
warm

A. Fl. Kl. Vl. Vla. Vc.

*p* *pp* *c.l.b.*

332

A. Fl. Kl. Vl. Vla. Vc.

*kein decr.* *warm* *kein decr.* *pp*  
*warm* *kein decr.*  
*arco ord.* *warm* *kein decr.*  
*warm* *kein decr.*  
*warm* *kein decr.* *p*

344

A. Fl. Kl. Vl. Vla. Vc.

*p* *>* *>* *p* *p* *p*



357

A. Fl.

Kl.

VI.

Vla.

Vc.

pp

p

p

p

p

371

A. Fl.

Kl.

VI.

Vla.

Vc.

p

pp

p

p

p

385

A. Fl.

Kl.

VI.

Vla.

Vc.

p

p

p

pp

p